

NYPD Emerald Society
Winter Weekend
February 13-17, 2020

Reservation Form

Name _____

Address _____

City _____

State _____ Zip _____

Phone _____

of Adults _____

of Children _____ # of Teens _____

Email Address _____

Room(s) Near Party of _____

check desired room type
Standard (), 1 Bdrm Suite (), 2 Bdrm Suite ()

Accommodations Desired 2nd Choice _____

Enter date of arrival and date of departure
Arrival February __, 2020 - Departure February __, 2020

A \$50.00 PER ROOM DEPOSIT IS REQUIRED WITH RESERVATION

ALL RESERVATION TO BE MADE THROUGH NYPD EMERALD SOCIETY

Make Checks Payable to: Villa Roma Resort
Mail to: Chairman Tom Sullivan
132 Greencroft Avenue Staten Island, NY 10308-3040

Directions to Villa Roma

From New York and Metropolitan Area

(2 Hours) George Washington Bridge to New Jersey Palisades Parkway to New York Thruway North. Proceed on Thruway to Exit 16 and proceed west on Route 17 to Exit 104. Route 17B (Raceway Road). Go West to Cochection 17 miles, at the blinking light turn right at the intersection on Route 17B West and 52A, then follow the signs to the Villa Roma.

From Binghamton, Rochester and Upstate Area

Interstate Highway 490 South to the New York Thruway (90) East. In Syracuse leave Route 90 for Interstate 81 South to Binghamton. Here pick up Route 17 East (Quickway) to Hancock Exit Route 97. Follow this to Callicoon. Turn left at traffic light before bridge onto 17B which becomes Route 52. Follow the signs to the Villa Roma.

From Connecticut

Route 84 West to Route 17, West to Exit 104, Route 17B (Raceway Rd.) Go West 17 miles to Cochection turn right at the blinking light at the intersection of Route 17B West and 52A, follow the signs to Villa Roma.

From Southern New Jersey and Philadelphia

New Jersey Turnpike to Exit 11 Garden State Parkway North to New York State Thruway North. Leave Thruway at Exit 16 and proceed to Route 17 to Exit 104, Route 17B (Raceway Rd). Go West to Cochection 17 miles, there turn right at the blinking light at the intersection of Route 17B West and 52A. Follow the Villa Roma signs.

From Boston and the New England States

Mass. Turnpike to Sturbridge Exit. Route 86 South to Route 84 West. Proceed to New York Exit 4W to Route 17 Quickway West to Exit 104. Route 17B (Raceway Rd.) Go West to Cochection 17 miles, at blinking light turn right at the intersection of Route 17B and 52A, then follow signs to Villa Roma.

From Albany Area

Take New York State Thruway to Exit 19 (Kingston Exit) Take 209 South to Ellenville. Take Route 52 West to Jeffersonville. Then follow signs to Villa Roma.

From Stewart International Airport

Follow signs to Route I-84 (left on Rte 207 East 9 mi., left on Rte 300 N. 2.1 mi.) Route I-84 West to Middletown (Exit 4) and Route 17, West to Exit 104, route 17B (Raceway Rd). Go West to Cochection 17 miles. At the blinking light turn right at the intersection of Route 17B and 52. Follow signs to Villa Roma.



**NYPD
Emerald Society**

**55th Annual
Winter Weekend**

February 13-17, 2020

Room Rates February 14-16, 2020

Traditional

Double Occupancy	\$451.00
Triple Occupancy	\$426.00
Single Occupancy	\$636.00

One Bedroom Suites (Limited Availability)

Double Occupancy	\$551.00
Triple Occupancy	\$519.00
Single Occupancy	\$786.00

Two Bedroom Suites (Limited Availability)

Double Occupancy	\$651.00
Triple Occupancy	\$612.00
Quad Occupancy	\$593.00

Children sharing room with adult(s)
in any accommodation

Children 0-14 Up to 3 per room.....	FREE
Children 15-17	\$106.30

Early Arrival Rate

Thursday Only, February 13, 2020

Traditional

Double Occupancy	\$120.00
Triple Occupancy	\$114.00
Single Occupancy	\$170.00

One Bedroom Suites (Limited Availability)

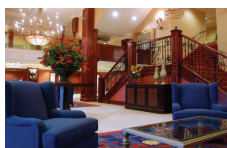
Double Occupancy	\$120.00
Triple Occupancy	\$114.00
Single Occupancy	\$170.00

Two Bedroom Suites (Limited Availability)

Double Occupancy	\$120.00
Triple Occupancy	\$114.00
Single Occupancy	\$170.00

Children sharing room with adult(s)
in any accommodation

Children 0-14 Up to 3 per room.....	FREE
Children 15-17 Up to 1 per FREE all other.....	\$53.15



Main Lobby



Main Dining Room

Room Rates February 14-17, 2020

Traditional

Double Occupancy	\$559.00
Triple Occupancy	\$529.00
Single Occupancy	\$779.00

One Bedroom Suites (Limited Availability)

Double Occupancy	\$659.00
Triple Occupancy	\$622.00
Single Occupancy	\$929.00

Two Bedroom Suites (Limited Availability)

Double Occupancy	\$759.00
Triple Occupancy	\$717.00
Quad Occupancy	\$686.00

Children sharing room with adult(s)
in any accommodation

Children 0-14 Up to 3 per room.....	FREE
Children 15-17	\$159.45

***RATES ARE PER PERSON AND
INCLUDE TAXES AND GRATUITIES**

For Additional Information Contact

Tom Sullivan (718) 967-9146

nypdemeraldsweb@aol.com

Sean Patterson (718) 351-7824

shamrck73@aol.com

**ALL RESERVATIONS TO BE MADE
THROUGH TOM SULLIVAN, NYPD
EMERALD SOCIETY**



Mezzanine Bar



Cappuccino & Gelato Bar

Rates include

- Entertainment Including
A Band of Rogues, The Garda Band, & Shay Mac
NYPD Emerald Society Pipes & Drums, and Late
Night DJ!
- Three meals daily starting with dinner on arrival,
ending with lunch on departure
- Welcome reception & cocktail party
- Complimentary beer, wine & soda in
hospitality room
- Sunday Mass
- Winter Sports including skiing, tubing, ice skating
(Discounted Rates Available)
- Resort activities including BINGO, turtle racing,
bocce tournaments, Mock Horse Racing and more
- Activities with Anthony & a hilarious visit from
Macaroni the Clown
- Guinness Sunday Afternoon
- Indoor sports complex with bocce, shuffleboard,
ping pong, pool tables, video games
- Indoor swimming pool, hot tub & sauna
- 5000 sq ft fitness center

Rates do not include:

- Indoor Tennis Center featuring handball and
racquetball
- Bowling on our eight (8) regulation
bowling lanes
- Horseback riding and paintball
- Lift tickets for skis, snowboarding and
snow tubing
- Equipment rental for skiing & snowboarding
- Ice Skating & Ice Skate Rental
- Spa services
- Trip to the Woodstock museum at Bethel Woods



Marty's Lounge



Roman Gardens Cafe